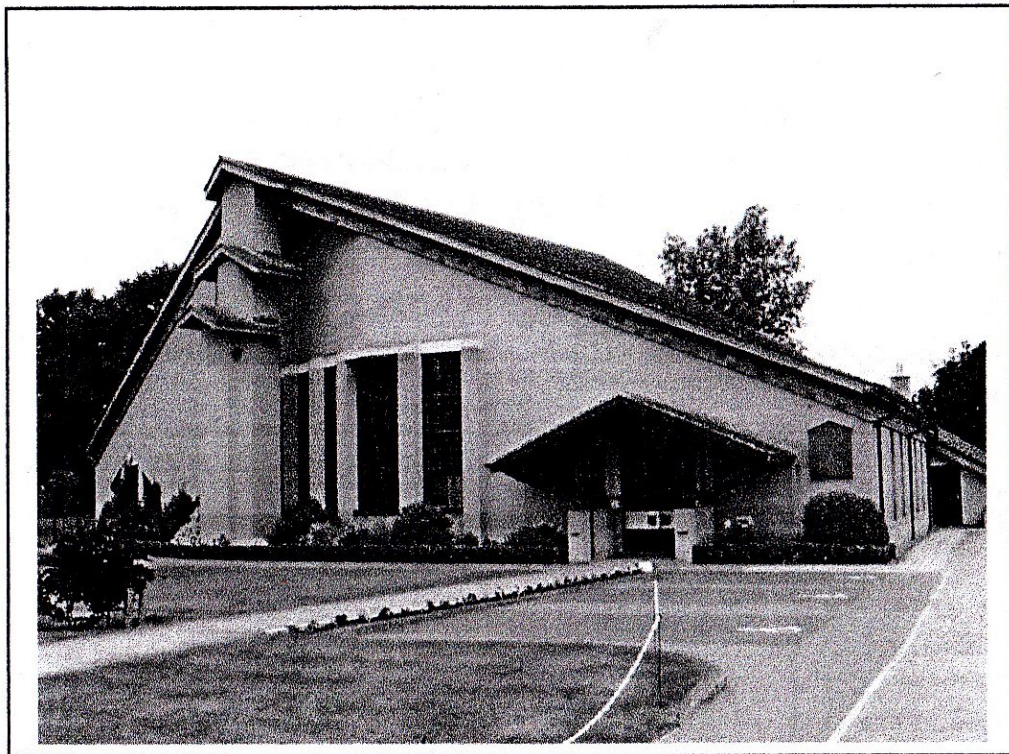


Welcome to ~

St. Margaret Clitherow

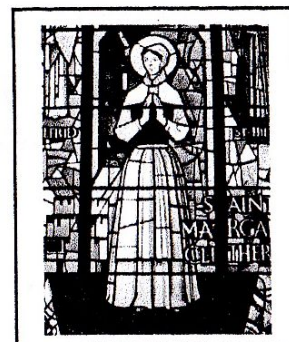
Catholic Church



Parish Priest:-

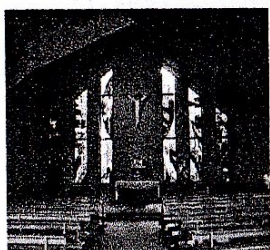
Father Kevin Trehy Tel. 01904 768931

As we enter the **Porch**, a place of Welcome and Information about our Parish, we make the Sign of the Cross with water from the Holy Water Font on the wall. In the Porch are books for Morning Prayer, said before daily Mass. We enter the Church and find our Book of Intercessions where anyone may write a petition for prayers. Then immediately on our left, is the **window** of our Patron Saint, Margaret Clitherow with local Saints, Wilfrid and Hilda. The window was designed and crafted by Harry Harvey FMGP.



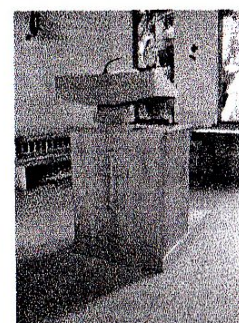
Passing the **Organ**, built by Makins of Oldham, and the **Choir Stalls**, we proceed up the left-hand aisle noting some of the 14 bronze plaques which appear on the walls around the Church. These '**Stations of the Cross**' tell the story of the Passion and Death of Our Lord. In Lent, especially, we symbolically accompany Him on His 'Via Dolorosa', by saying special prayers at each Station.

Just before we reach the door to the **Confessional**, where our priest administers the Sacrament of Reconciliation, we find **the statue of Our Lady**, Mary the Mother of Jesus. Behind the statue is a **painting** by Bridget Tempest depicting the beauty of the natural world and some of the achievements of human endeavour. We light **candles** here as a symbol of our prayers which we offer in communion with Our Lady.

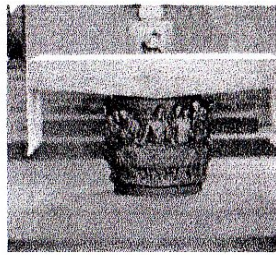
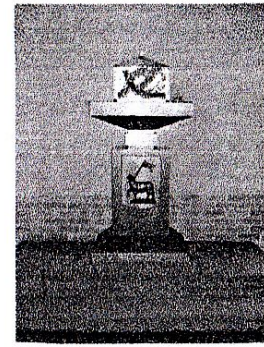


Now we approach the most sacred part of our Church, the Sanctuary, where the Eucharist is celebrated. On the wall you will see a **Statue of Our Risen Lord**, arms outstretched in blessing. On either side, the **stained glass windows**, designed by Graeme Willson and installed in 2009, are a memorial to Canon John Mortell, who was Parish Priest when the Church was built in 1985.

The **Lectern** stands on the left of the Altar. The Holy Scriptures are read from the Lectern at every Mass. There are usually three Readings - from the Old Testament, the Epistles and the Gospels. Between the first and second readings, a Psalm is said or sung responsorially and after the readings, a homily is preached by our Priest who also reads the Gospel.

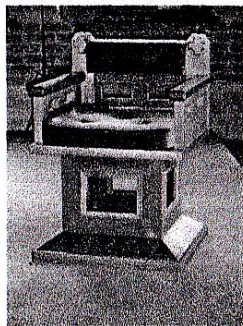


Behind the Altar is the *Tabernacle* where the Blessed Sacrament is Reserved. The *Sanctuary Lamp*, burning on the side wall is the sign of Our Lord's Presence in the Blessed Sacrament. From the Tabernacle, consecrated Hosts are taken to the sick and housebound who are unable to come to Mass. We honour the Presence of Our Lord in the Blessed Sacrament by genuflecting or bowing towards the Tabernacle.



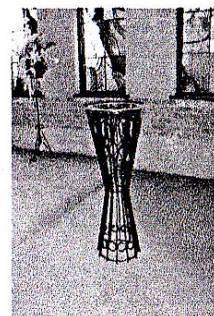
Central to the *Sanctuary* is the *Altar* on which the Sacrifice of the Mass is offered. Here the bread and wine become the Body and Blood of Our Lord, our spiritual food and drink, as Our Lord's Sacrifice on Calvary is made present for us. We venerate the Altar because of its significance.

The base of the Altar came from Italy and shows the Last Supper of Jesus and His disciples. Within every Catholic Altar there is a small relic of a saint of the Church – a custom dating from the time when Mass was said over the tombs of the martyrs in Rome.



On the right of the Altar is the *Priest's Chair*. Here the Priest presides over the gathering of the faithful, leading them in prayer.

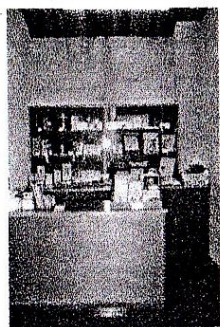
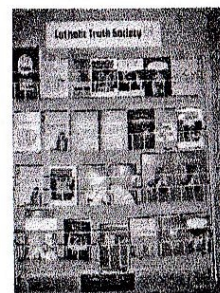
Alongside the Priest's Chair is the *Baptismal Font* where babies are brought to be baptised in the Name of the Father, the Son and the Holy Spirit. The Sacrament of Baptism is the means of Entry into the Church, the Body of Christ, and brings the new spiritual life which is God's gift to all Christians.





On the right of the Sanctuary you will see the *Statue of the Sacred Heart of Jesus*. The exposure of the Heart of our Lord on the statue is a visual reminder of the great love which led Jesus to give His life in sacrifice for the sins of all humankind. Lighted candles are a sign of our prayers.

As we leave the Church, we see on the back wall the *Catholic Truth Society Booklets* which provide helpful summaries of many topics - Catholic Doctrine, Church History, Moral and Social Teaching and many more. These booklets are for sale.



Entering the Porch again, we see ahead of us the *Repository*, sometimes called the Piety Stall. Here Bibles, Missals (Mass Books), Rosaries, cards and small gifts are available for purchase. The Repository is open after Mass.

As we leave the Porch, we use the Holy Water Font again to bless ourselves with the Sign of the Cross in the Name of the Father, the Son and the Holy Spirit.

Our Parish

The Parish of St Margaret Clitherow was formed in 1977. and our building was erected in 1985 when Canon John Mortell was the Parish Priest.

The Parish now numbers about 370 families. Mass is celebrated at 9am on Sundays, with the Vigil Mass at 6pm on Saturdays. For other Masses, and our many activities, please see the Weekly Bulletin or the Notice Board in the Porch.

A warm welcome is offered to all visitors at all times. May God bless you.